

# **WARWICKSHIRE WASTE PARTNERSHIP**

**COMMITTEE ROOM TWO, SHIRE HALL, WARWICK**

**Wednesday 19 December 2018 at 2pm**

## **AGENDA**

### **General**

- 1 Apologies**
- 2 Disclosures of interests**
- 3 Minutes of the meeting held on 12 September 2018, including matters arising**
- 4 Waste Management Performance Data**

The Waste Partnership is asked to note the performance data including Waste Data Overview for Q1 + Q2 2018/19, Household waste performance for 2017/18 and projections for 2018/19
- 5 Waste Collection in Warwickshire**

Presentation from Tony Perks, Stratford-on-Avon District Council
- 6 Waste Composition Report**
- 7 Less Plastic, Fantastic!**

Verbal Update
- 8 Waste App**

Verbal Update
- 9 Waste Partners Report**
- 10 Verbal Updates**

A) Warwickshire Waste Partnership Conference 2019

B) Update on resources and waste strategy
- 11 Any urgent items**
- 12 Agenda item suggestions for next meeting**
- 13 Dates of future meetings**
  - 20 March 2019, 2.00 pm, Shire Hall, Warwick

## **Membership of the Warwickshire Waste Partnership**

### **North Warwickshire Borough Council**

Councillor Margaret Bell

### **Nuneaton and Bedworth Borough Council**

Councillor Jill Sheppard

### **Rugby Borough Council**

Councillor Lisa Parker

### **Stratford-on-Avon District Council**

Councillor Mike Brain

### **Warwick District Council**

Councillor Moira-Ann Grainger

### **Warwickshire County Council**

Councillors Richard Chattaway, Jenny Fradgley, John Horner, David Reilly (Chair) and Andy Wright

## **Enquiries**

Tom McColgan, Democratic Services Officer, Warwickshire County Council

T: (01926) 418079

E: [tommccolgan@warwickshire.gov.uk](mailto:tommccolgan@warwickshire.gov.uk)

## WARWICKSHIRE WASTE PARTNERSHIP

### Minutes of the meeting held on 12 September 2018 at Shire Hall in Warwick

#### **Present:**

#### Warwickshire County Council

Councillors: Jenny Fradgley  
John Horner  
Bill Olnier  
Dave Reilly (Chair)  
Andy Wright

Officers: Shirley Round – Interim Democratic Services Officer  
Phil Evans – Head of Community Services  
Andrew Pau – Waste Management & Partnerships Group Manager  
Ruth Dixon – Waste Strategy & Commissioning Manager  
Tamalyn Goodwin – Project Manager

Observers: Councillor Keith Kondakor

#### North Warwickshire Borough Council

Councillor Margaret Bell  
Councillor Les Smith  
Richard Dobbs – Assistant Director (Streetscape)

#### Nuneaton and Bedworth Borough Council

Richard Shields

#### Rugby Borough Council

Councillor Lisa Parker  
Shaun Barnes

#### Stratford-on-Avon District Council

Tony Perks  
Craig Bourne

#### Warwick District Council

Councillor Moira-Ann Grainger  
Gary Charlton

#### **1. Apologies**

Councillors Richard Chattaway (substitute Bill Olnier), Jill Sheppard

#### **2. Disclosures of interests**

None

### **3. Minutes of the previous meeting, including matters arising**

The minutes of the meeting held on 19 June 2018 were approved as a correct record and signed by the Chair.

#### Matters Arising

None

### **4. Waste Management in Warwickshire**

Andrew Pau, Waste Management and Partnerships Group Manager, gave a presentation to the Partnership (slides appended to these minutes) and a brief discussion was had with Members:-

#### (1). Collection & Disposal Authority Roles

Members were advised that Warwickshire County Council (WCC) was the Disposal Authority and the District and Borough Councils are the waste collection authorities in Warwickshire.

WCC is responsible for disposal of waste arisings, and works with the Borough and District Councils who are responsible for its collection.

It was acknowledged that changes at the disposal or collection authority can impact the overall cost of the waste service across the County. For example the location of a disposal point can impact on the cost of waste collection. Partners need to work together to keep waste service costs across the County to a minimum.

Some discussion also took place regarding the current market for recyclable materials and the difficulties of recycling certain material types including black plastics. Waste Resources Action Programme has been investigating the use of a blue dye instead of black which could help with the sorting of black plastic and may therefore improve its recycling.

#### (2). The Waste Hierarchy

The Partnership was advised that, in terms of costs, the cheapest option is to minimise the generation of waste in the first instance. A query was raised on why any material is disposed of to landfill and it was explained that was the only option for some material - for example hazardous waste. There is a cost to recycling, but this is generally less than the cost of disposal to landfill. The collection authorities are currently provided with resource in the form of recycling credit payments per tonne of materials recycled by the disposal authority. This is a payment designed to encourage recycling and reflects that the disposal authority is not meeting the cost of the material being disposed of. It was explained that in some instances the recycling credit did not cover the service cost for the recycling service provided by the Borough or District. However Borough and District Councils can increase their income on top of the credit payment in some instances by selling certain materials such as paper and cardboard in order to gain an income. There was some

movement in the value of recyclate which generally reflected changes in the economy.

A significant cost of disposal is landfill tax, a tax which is paid by the Council for every tonne of waste that is disposed of to landfill. This payment goes to central government. A small amount is then used to provide community group funding for projects.

### (3). Household Waste Recycling Centre Provision

The HWRC's around the County are Warwickshire County Council's 'shop front' for the waste service. Members were advised of the products/materials that could be recycled at the centres and also where in the county they are. There had been 1.48 million visits made to the County's HWRC's in 2017/18.

It was acknowledged that there have been some issues recently relating to the temporary closure of some of the sites, largely as a result of plant failure and vehicle breakdowns as well as staff shortages and sickness. It was noted that closing sites was always a last resort and the County Council is working hard to increase the resilience of HWRCs across the County. Funding of the HWRC service impacts the level of service that can be delivered and that there are longstanding issues at some of the sites relating to layout and access arrangements.

A particular issue was raised around operatives advising the public to put potentially recyclable items into the landfill container. This was not ideal and it was agreed that this could damage the public's perception of the service. On occasions with exceptionally high demand, it was noted that recycling was 'sacrificed' to keep a facility from reaching capacity and closing. Members were reassured that this only happened as a last resort.

It was requested that it was important to use the term Household Waste Recycling Centres, rather than 'tips' or 'dumps', as this properly reflects the service on offer.

### (4). Collection Schemes

Members were provided with information showing the different kerbside collection services run in the County by each of the Borough and District Councils.

Currently only Rugby Borough Council are making a charge for the collection of organic waste. Rugby Council's representative stated that the rationale for this was to charge those producing the waste, which should ideally be composted at home in line with the waste hierarchy.

There was some discussion regarding flats recycling and the lack of service for some people who live in flats. The main issue with flats recycling is the lack of accountability which can result in excessive contamination. There was also considered to be differing attitudes relating to waste and recycling.

Options for waste management and recycling in the future would be brought to a future meeting of the Partnership.

#### (5). Behaviour Change

RD presented information to the Partnership on the campaigns and education items that the communications team were currently working on.

It was explained that at present 30% of the waste placed in the kerbside residual waste bin was food waste and that this could be put into the organic or 'green' waste bin. This is a matter of educating the public to change their behaviour in this regard and a series of campaigns and promotional work are underway to do this for example:- Slim Your Bin, In to Win. A promotion to encourage use of compost bins and food digesters is underway and the details shared.

The communications team for Waste Management is 2.5 Full Time Equivalent staff with a small budget for promotion and projects. The Partnership discussed various options to encourage and promote good recycling practice, accepting that changing culture was a long term approach.

Members requested a breakdown of the costs for the campaigns.

It was noted that some of the participation figures for these good campaigns were low and how this could be improved should be looked at.

Richard Dobbs (Assistant Director, Streetscape) sought members support for all the campaigns and in particular requested that they sign up to the newsletter and the online Slim your Bin campaign and, if using social media, to 'like', 'comment on' and 'share' the social media promotions. It was agreed that the information would be sent to all Borough and District Councils to share with their members to get the message out more widely.

#### (6) The Future of Waste – Drivers for Change

The Partnership was provided with a number of areas which would have an impact on Waste Management in the medium and longer term. These included:-

- An increase in new and more challenging performance targets
- Changes in technology
- Effects of recycling markets
- Decreases in the level of funding available

There was some discussion with members around market forces and how the Council may be able to gain better/higher financial rewards by being smarter in its business approach.

It was agreed that an understanding, of the challenges going forward at the Waste Collection Authority level faced would be useful. North Warwickshire Borough Council offered to provide such a presentation to a future meeting.

## **Resolved**

That the Waste Partnership note the information presented to it on Waste Management and continue to promote and encourage good recycling/composting practice with the public and colleagues.

### **5. Waste Management Performance Data**

The Provisional Waste Management Data for Quarter One 2018/19 was presented to the Partnership which showed that the level of green waste collection had been higher than expected. The recycling, composting and re-use rate compared favourably with the national picture but the aim was to continue to increase this further and to keep residual waste low.

WCC acknowledged that the Household Waste Recycling Centres were not performing as well as they should. This is due to the age of some of the plant machinery at the sites and transportation issues. The locations of the sites are historic and, as the County has grown, some sites are no longer fit for purpose in terms of capacity and location. Phil Evans, Head of Community Services, advised that it was an area of the service that needed review in relation to the cost of the service, versus the quality of it.

Members suggested that S106 monies could be used to provide new sites given the increases in population resulting from the new development in the County. It was agreed that the members would, for the next meet, seek information from their Councils to see if anything had been included in their Infrastructure Plans in this regard.

The members considered the data relating to the waste collection at a district level and made comments as follows:-

North Warwickshire –

- Performance remains steady even though there has been an increase in the level of new development locally
- There is a need to consider how figures can be improved on whilst having reduced resources available.
- The Council may need to consider return to weekly bin collections

Rugby –

- The green bin charge introduction has gone well with 23,000 people signing up
- The residual waste has remained steady which suggests that there could be limited green waste in the residual bin

Stratford –

- There has been an increase in composting

- Reduction in residual waste
- Increased income for the District

Warwick –

- The service is doing OK
- Local Household Waste Recycling Centre service performance is more concerning at present

It was agreed that officers would provide some longer term trend data and the kg of residual waste per household for each district.

### **Resolved**

- (1) That the Waste Partnership note the performance data including provisional data for the 1<sup>st</sup> quarter of 2018-19 (April to June 2018) and a projection for 2018-19
- (2) That Members provide information on any provision for HWRCs contained within the Infrastructure Plans for their districts to the next meeting
- (3) That longer term trend data and the KG of residual waste per household for each WCA will be reported at the next meeting

## **6. Plastic Waste**

The Partnership received a report which provided an overview of the local recycling facilities and corporate waste management within the County Council.

Members requested additional information on the amount of paper purchased by the Council to ascertain whether the percentage recycled was a positive figure.

Rugby Borough Council will seek assistance from Ruth Dixon, Waste Strategy & Commissioning Manager, regarding schemes aimed at a reduction in the use of plastic within the Council.

Warwick District Council had replaced a lot of plastic, but looking to reduce this further and would share a recent report on plastic reduction with the Partners.

Stratford District Council reported that reusable water bottles had been purchased for staff.

### **Resolved**

That the Waste Partnership acknowledges the contents of the report and continues to share best practice.



## 7. Waste Partners Report

The Partnership received a report to update them on the various waste initiatives that each of the authorities was undertaking currently. The following points were highlighted:

North Warwickshire Borough Council - The trial of bags referred to in the report had commenced on 12 September and would be ongoing for the two months to November 2018.

Rugby Borough Council – There has been 23,000 subscriptions to the green bin collection scheme in 2018/19 which is approximately 600 more than in the previous year.

Warwick District Council -

- Tassimo have reported that the trial will not continue, its impact was limited with only 580 participants delivering 836 kg.
- Promotion in schools including explaining the impact of litter on animals.
- Paper to Council to increase the number of litter bins across the district
- There have been a number of extra collections from HMOs
- Rugby continue to provide WDC's enforcement service, concentrating on key areas and the arrangement was considered successful
- Students are returning now so the Council had been trying to engage them in campaigns at the universities and colleges
- The Council have undertaken some small media campaigns with clean up Britain regarding street cleansing of chewing gum and would be happy to share these with Partners

Stratford on Avon District Council – The Council has been promoting their dry recycling services and had made anti-littering a local priority during the tourist season.

Members suggested that fly tipping and the number of prosecutions taken across the County may be a topic of interest for inclusion on the work programme at a future meeting.

Warwickshire County Council – The Council has been in contact with a community group called Rubbish Friends regarding an event taking place at Morrisons in Stratford on Sunday 30<sup>th</sup> September. (Rubbish Friends have been involved with several community litter picks and promotions).

Members requested that a report be prepared for a future meeting on the Repair Café in Sydenham, Leamington.

**Resolved**

That the Waste Partnership acknowledge the updates on the various waste activities taking place in each area since the last partnership meeting in June 2018 and requested further reports on fly tipping prosecutions and the Repair Café for inclusion on the work programme.

**8. Verbal Update**

This item had been covered in the presentation slide – ‘The future of waste, drivers for change’ (item 4 (6) above).

**9. Exclusion of Public**

**Resolved**

That members of the public need not be excluded from the meeting for item 9 below as defined in paragraph 3 of Part 1 of Schedule 12A of the Local Government Act 1972.

**10. Joint Working Opportunities**

Phil Evans, Head of Community Services, reported that he had visited four of the five waste collection authorities with the Chair since the last meeting, to discuss and share challenges within the waste service. The meetings have been productive and have resulted in a number of lines of enquiry specific to each individual waste collection authority.

**Resolved**

That the Waste Partnership note the report.

**11. Any urgent items**

None

**12. Agenda item suggestions for next meeting**

None

**12. Dates of future meetings**

The Waste Partnership noted the dates of future meetings:

- 19 December, 2018, 2.00pm, Shire Hall, Warwick
- 20 March 2019, 2.00 pm, Shire Hall, Warwick

The meeting closed at 4.00pm

.....  
Chair

## Warwickshire Waste Partnership

19 December 2018

### Waste Data Overview for Q1 + Q2 2018/19 Household waste performance for 2017/18 and projections for 2018/19

#### Recommendations

- (1) The Partnership is asked to note the provisional data for the 1<sup>st</sup> and 2<sup>nd</sup> quarters of 2018/19 - April to September 2018.
- (2) The Partnership is asked to note the provisional data for the financial year 2017/18 and estimated projections for 2018/19, based on the first half of the year's performance.

#### 1.0 Data Overview

- 1.1 This report contains a mixture of data taken from Waste Data Flow and from Warwickshire County Council in-house records and at the publication of this report are considered **provisional estimates**.
- 1.2 The figures should be treated as provisional as data may be changed until all authorities data is approved by the EA and DEFRA through the Waste Data Flow System.

	Name	Contact Information
Report Author	Nav Rai	<a href="mailto:navrai@warwickshire.gov.uk">navrai@warwickshire.gov.uk</a>
Assistant Director for Environment Services	Stuart Jackson	<a href="mailto:stuartjackson@warwickshire.gov.uk">stuartjackson@warwickshire.gov.uk</a>
Joint Managing Director (Communities)	Monica Fogarty	<a href="mailto:monicafogarty@warwickshire.gov.uk">monicafogarty@warwickshire.gov.uk</a>
Portfolio Holder - Environment and Heritage and Culture	David Reilly	<a href="mailto:cilreilly@warwickshire.gov.uk">cilreilly@warwickshire.gov.uk</a>

## Provisional Waste Management Data Quarter 1 + 2 2018/19

### 1. Estimated provisional performance Q1 + Q2 (household waste)

	Q1 + Q2 2017/18	Q1 + Q2 2018/19	Change
<b>Recycling/Reuse rate</b>	30,959 tonnes	31,359 tonnes	☺ 400 tonnes up
	22.8%	23.4%	☺ 0.6% up
<b>Composting rate</b>	45,919 tonnes	44,024 tonnes	✘ 1,895 tonnes down
	33.9%	32.9%	✘ 1.0% tonnes down
<b>Recycling, Composting and Reuse rate</b>	76,878 tonnes	75,383 tonnes	✘ 1,495 tonnes down
	56.7%	56.3%	✘ 0.4% down
<b>Landfill rate</b>	20,274 tonnes	19,575 tonnes	☺ 699 tonnes down
	15.0%	14.6%	☺ 0.4% down
<b>Energy from waste</b>	38,437 tonnes	39,055 tonnes	✘ 618 tonnes up
	28.3%	29.1%	✘ 0.8% up
<b>Total Household waste</b>	135,589 tonnes	134,013 tonnes	☺ 1,576 tonnes down
			☺ 1.2% down

## 2. Provisional Performance for 2017/18, with estimated projections for 2018/19 (household waste)

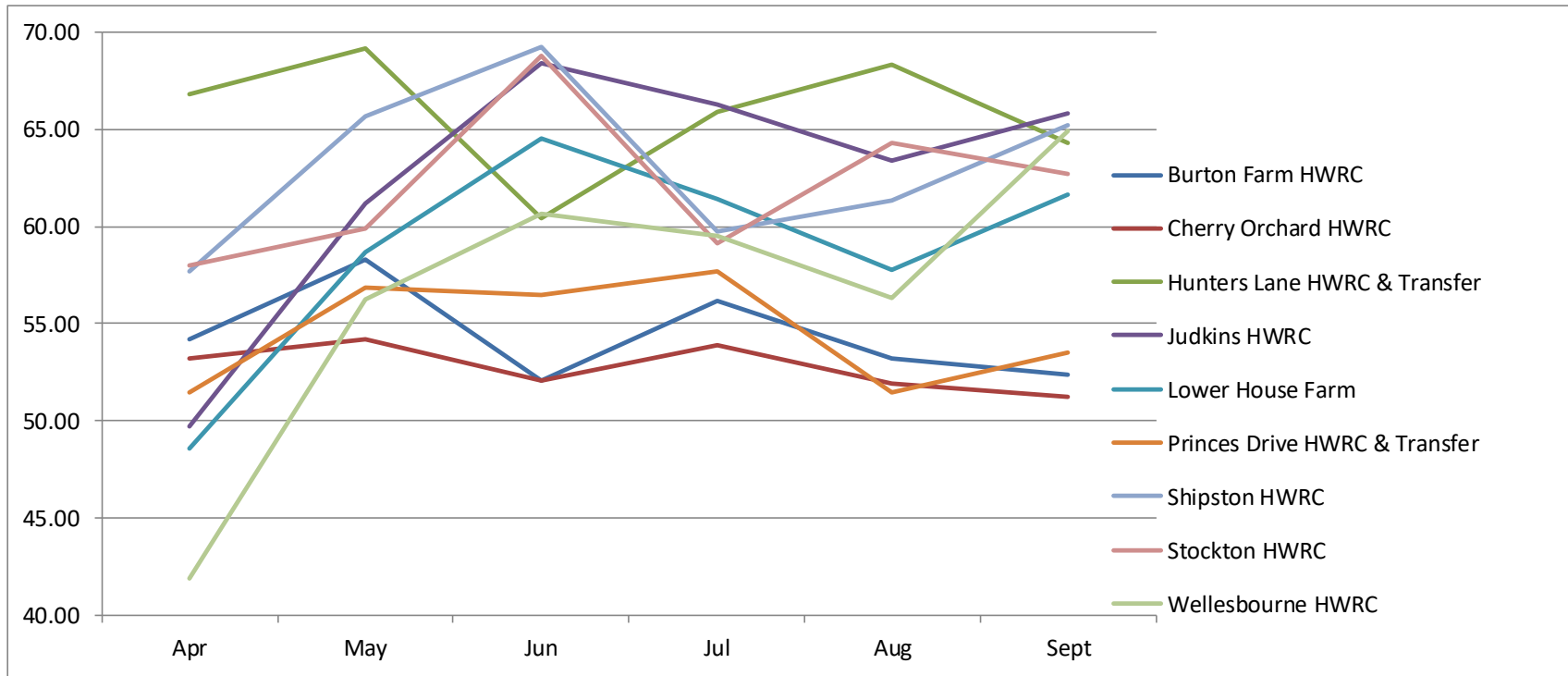
HH	North Warwickshire			Nuneaton and Bedworth			Rugby			Stratford			Warwick			Warwickshire		
	2016-17	2017-18	2018-19 est	2016-17	2017-18	2018-19 est	2016-17	2017-18	2018-19 est	2016-17	2017-18	2018-19 est	2016-17	2017-18	2018-19 est	2016-17	2017-18	2018-19 est
<b>Recycling rate</b>	5,300 tonnes 19%	5,335 tonnes 19%	5,526 tonnes 20%	8,456 tonnes 18%	9,292 tonnes 19%	9,328 tonnes 19%	9,761 tonnes 23%	10,277 tonnes 26%	10,289 tonnes 26%	14,032 tonnes 25%	14,044 tonnes 25%	14,210 tonnes 26%	11,441 tonnes 22%	10,823 tonnes 21%	10,836 tonnes 21%	64,832 tonnes 25%	60,639 tonnes 24%	61,039 tonnes 24%
<b>Composting rate</b>	7,850 tonnes 28%	7,417 tonnes 26%	6,835 tonnes 25%	12,115 tonnes 25%	11,258 tonnes 23%	10,838 tonnes 23%	11,643 tonnes 27%	7,573 tonnes 19%	7,379 tonnes 18%	20,511 tonnes 36%	19,503 tonnes 35%	19,018 tonnes 35%	17,365 tonnes 33%	16,212 tonnes 31%	15,770 tonnes 31%	75,981 tonnes 29%	69,726 tonnes 27%	67,831 tonnes 27%
<b>Recycling, Composting and Reuse Rate</b>	13,152 tonnes 46%	12,788 tonnes 46%	12,397 tonnes 45%	20,571 tonnes 43%	20,754 tonnes 43%	20,370 tonnes 43%	21,404 tonnes 50%	17,862 tonnes 45%	17,680 tonnes 44%	34,543 tonnes 61%	33,548 tonnes 60%	33,229 tonnes 60%	28,806 tonnes 55%	27,035 tonnes 52%	26,606 tonnes 52%	140,813 tonnes 54%	130,365 tonnes 51%	128,870 tonnes 51%
<b>Residual</b>	15,340 tonnes 54%	15,307 tonnes 54%	15,065 tonnes 55%	27,572 tonnes 57%	27,586 tonnes 57%	27,522 tonnes 57%	21,317 tonnes 50%	22,163 tonnes 55%	22,317 tonnes 56%	21,847 tonnes 39%	22,113 tonnes 40%	22,023 tonnes 40%	23,892 tonnes 45%	24,700 tonnes 48%	24,684 tonnes 48%	118,018 tonnes 46%	123,686 tonnes 49%	123,605 tonnes 49%
<b>Total</b>	28,492 tonnes	28,095 tonnes	27,461 tonnes	48,143 tonnes	48,340 tonnes	47,892 tonnes	42,721 tonnes	40,025 tonnes	39,997 tonnes	56,390 tonnes	55,661 tonnes	54,947 tonnes	52,698 tonnes	51,735 tonnes	51,290 tonnes	258,831 tonnes	254,051 tonnes	252,475 tonnes
<b>Kg of residual per HH</b>	558 Kg	550 Kg	536 Kg	495 Kg	491 Kg	487 Kg	471 Kg	485 Kg	482 Kg	388 Kg	386 Kg	377 Kg	387 Kg	395 Kg	386 Kg	479 Kg	496 Kg	488 Kg
<b>Kg of all waste per HH</b>	1,036 Kg	1,010 Kg	978 Kg	864 Kg	861 Kg	847 Kg	945 Kg	875 Kg	864 Kg	1,001 Kg	971 Kg	941 Kg	854 Kg	827 Kg	802 Kg	1,050 Kg	1,018 Kg	997 Kg

**Partnership Targets 2020**

**Reuse, Recycling and Composting Rate 65%**

**Kg of Residual Waste per Household 311kg**

### 3. HWRC Performance for Q1 and Q2 2018/19



	Burton Farm HWRC	Cherry Orchard HWRC	Hunters Lane HWRC & Transfer	Judkins HWRC	Lower House Farm HWRC	Princes Drive HWRC & Transfer	Shipston HWRC	Stockton HWRC	Welles HWRC	Total
<b>Apr</b>	54.20	53.20	66.80	49.67	48.60	51.42	57.70	58.00	41.90	52.43
<b>May</b>	58.30	54.20	69.20	61.20	58.67	56.88	65.64	59.88	56.24	59.34
<b>Jun</b>	52.10	52.10	60.40	68.40	64.50	56.44	69.27	68.77	60.67	61.26
<b>Jul</b>	56.20	53.90	65.90	66.30	61.42	57.69	59.75	59.16	59.54	58.01
<b>Aug</b>	53.20	51.90	68.30	63.40	57.73	51.44	61.31	64.30	56.33	56.65
<b>Sept</b>	52.40	51.20	64.30	65.80	61.65	53.47	65.22	62.73	64.90	58.74
<b>Overall</b>	54.40	52.75	65.82	62.46	58.76	54.56	63.15	62.14	56.60	57.74

## Warwickshire Waste Partnership

19 December 2018

### Waste Composition Analysis

#### Recommendations

- (1) The Waste Partnership is asked to note the overview of the recent kerbside waste composition analysis and to consider how this information can be used to improve waste management across Warwickshire.

#### 1.0 Background

- 1.1 Warwickshire County Council commissioned a waste composition analysis to take place during a three week period in Sept 2018 on behalf of the Partnership using the same method as the 2017 waste composition survey.
- 1.2 The survey focused on the weight and composition of
- kerbside residual waste containers
  - kerbside organic/green recycling containers
- 1.3 Three samples of 50 households were taken in each Waste Collection Authority. Households were selected from a range of demographic profiles across the County; so that results from each survey could be weighted to provide an annual picture of the residual waste being collected within individual Waste Collection Authorities (WCAs), as well as across the County. This was repeated for bio-waste.
- 1.4 The key aim of the waste composition analysis is to understand the waste composition in Warwickshire and to provide information which could be used by the Partnership when planning future services and campaigns etc.

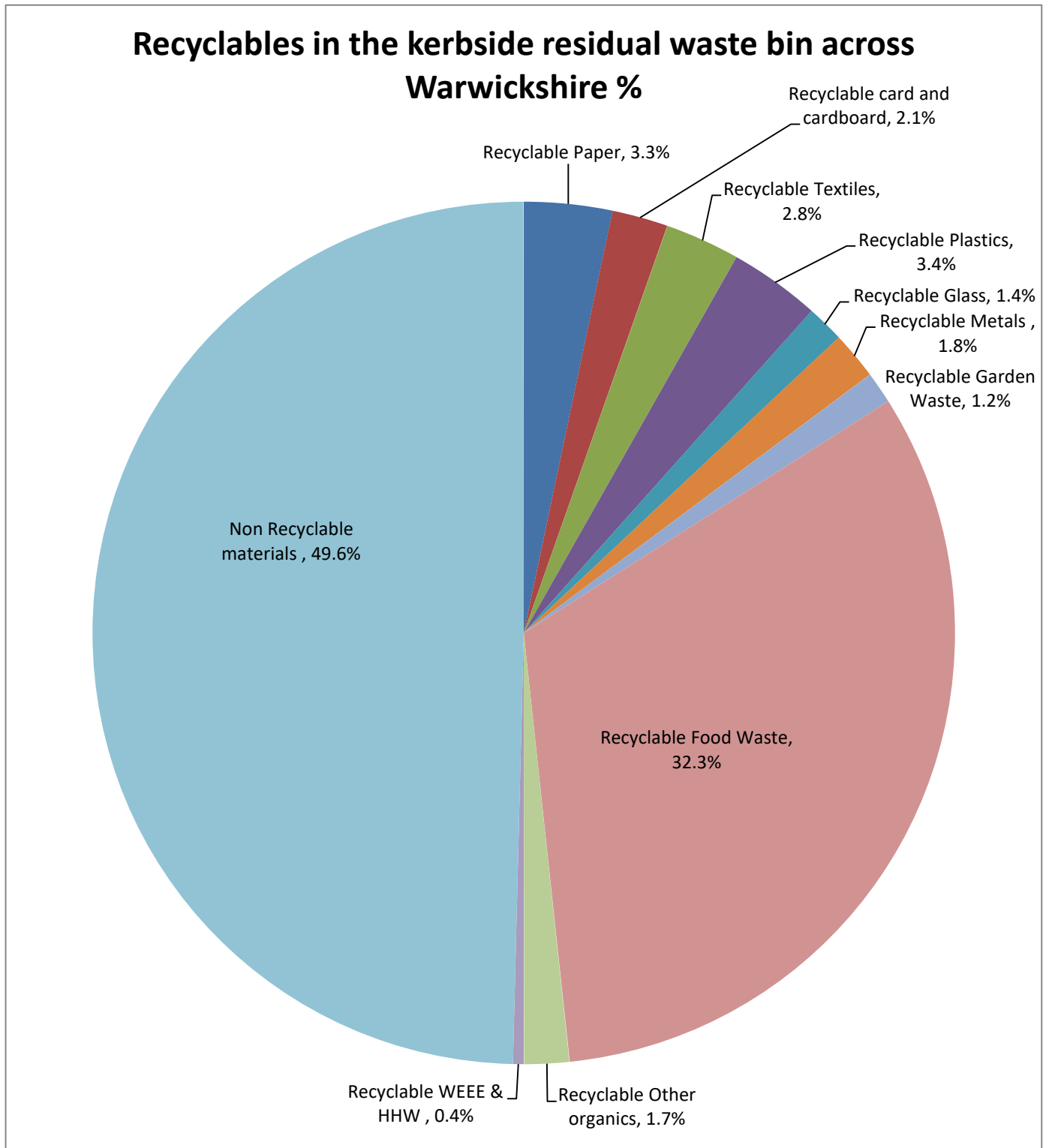
#### 2.0 Residual Kerbside Analysis

##### 2.1 Waste composition of the kerbside residual waste bin

Chart 1 below shows the composition of Warwickshire's kerbside residual waste bin showing the percentage of waste that could be recycled using the current kerbside systems. This shows that 50.4% of the residual bin is recyclable while 49.6% is non-recyclable.

This assumes that all households have access to the full range of kerbside recycling services including bio-waste. A proportion of householders in Rugby no longer have access to the bio-waste service.

**Chart 1 Percentages of recyclables in the kerbside residual waste bin across Warwickshire**





2.2 A breakdown of the waste material categories is provided at Appendix 1. Non-recyclable material at the kerbside includes paper tissue, books, plastic film, polystyrene, carpet and underlay, odd shoes, DIY materials, untreated wood, disposable nappies and adult hygiene products, pet litter, pyrex, soil and turf etc. A small proportion of these items could be recycled at the HWRCs.

### 2.3 Organics and Food within Residual Waste

The waste composition data shows that food waste continues to be the major recyclable component of the kerbside residual waste in Warwickshire making up about 1/3 of all residual kerbside waste.

Table 2 and Graph 3 show the KG/HH/WK of food waste in the kerbside residual bin for each year of the waste composition.

**Table 2 Recyclable food waste in the kerbside residual bin**

	2013	2014	2015	2016	2017	2018
Food waste KG/HH/WK	2.98	2.97	2.42	2.66	1.50	1.30

Based on this figure there is approximately 17,000 tonnes of food waste going into the residual waste bin that could be captured by a kerbside food waste collection. The best chance of capturing the majority of this material would be to offer weekly separate food waste collections.

Based on the data provided in section 3.2 annual County wide collection levels of food waste within the bio-waste currently collected is approximately 4000 tonnes.

Only 1.2% of residual waste was found to be garden waste.

### 2.4 Dry Recyclables

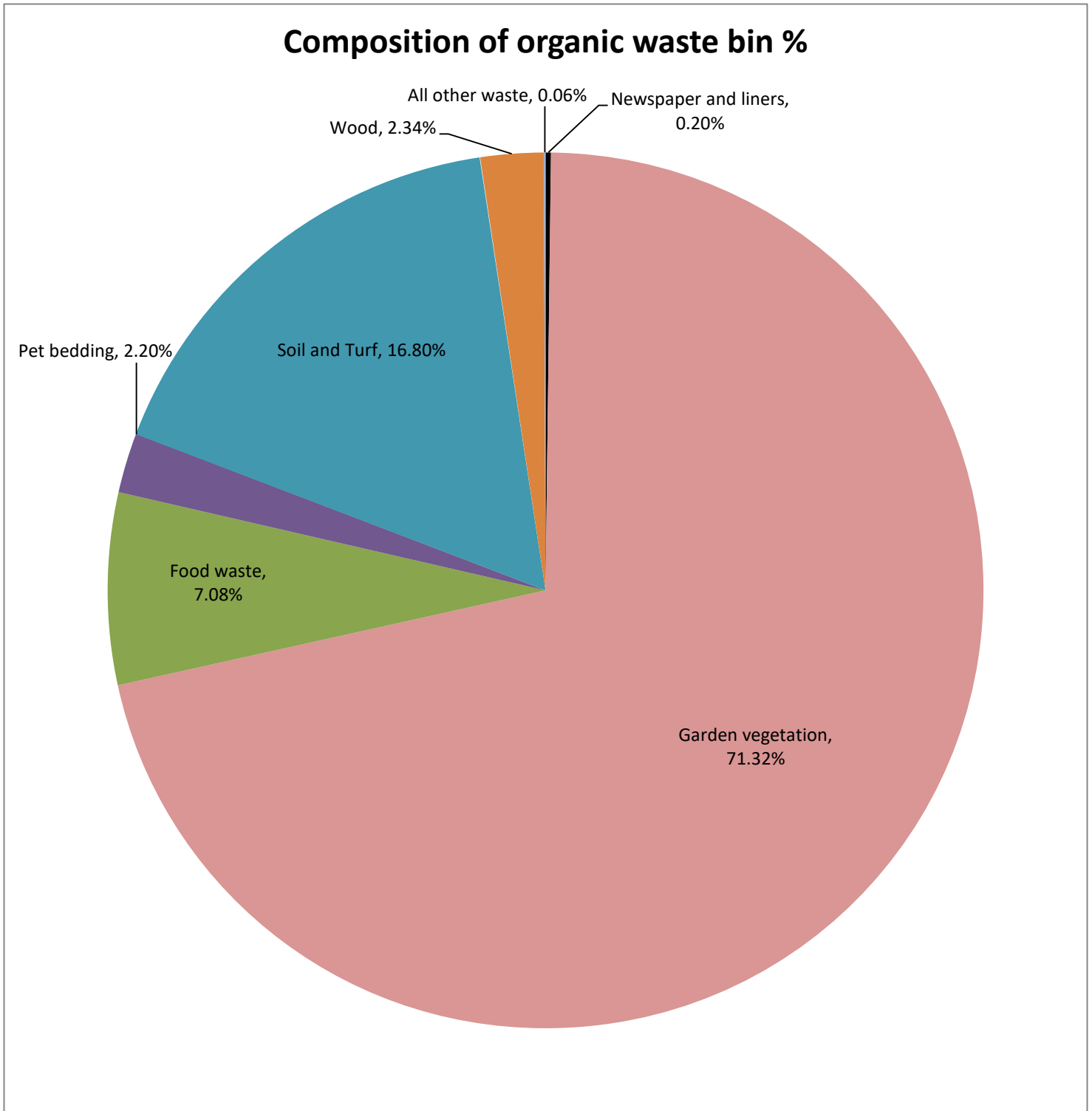
However, there are still dry recyclables in the kerbside residual waste for which there is comprehensive kerbside recycling collections across the County, this shows there is still more work to do to maximise the capture of this material. Details of the recyclables in the residual bin are provided in Appendix 2.

The amount of dry recycling in residual waste has decreased over the years. There are a number of technical reasons for this, but one reason is householders are doing more to put their recycling in the right container.

### 3.0 Organic Kerbside Analysis

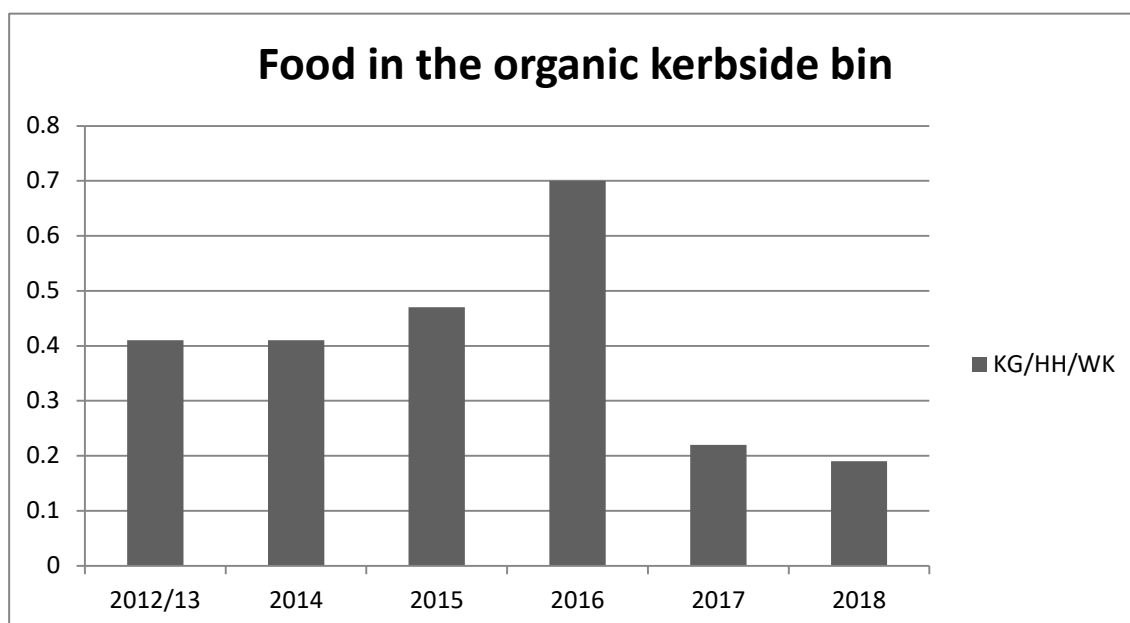
3.1 Chart 2 below shows the composition of Warwickshire's kerbside organic waste bin.

**Chart 2 Composition of the kerbside organic waste bin across Warwickshire**



3.2 The amount of food waste in the organic bin is 7.08% or 0.19 KG/HH/WK.

**Graph 2 Food in the organic kerbside bin**



**Table 3 Recyclable food waste in the kerbside organic bin**

	2013	2014	2015	2016	2017	2018
Home compostable KG/HH/WK	0.26	0.25	0.27	0.44	0.14	0.14
Non home compostable KG/HH/WK	0.15	0.16	0.21	0.26	0.08	0.05
All food KG/HH/WK	0.41	0.41	0.47	0.70	0.22	0.19

3.3 12.8% of food waste was correctly captured (recycled) by households, which is similar to last year. A proportion of householders in Rugby no longer access the biowaste service.

3.4 99% of garden waste was correctly captured (recycled) by households, which is similar to last year.

3.5 Warwickshire households diverted an average of 32.3% of their waste through the organic collections.

## 4.0 Next steps

4.1 This report provides vital information for all partners to drive future service planning, communication campaigns and projects. It is important that all partners use this information to target resources to ensure the amount of

recyclable materials that are currently being disposed of in the residual waste at the kerbside and at the HWRCs is reduced.

- 4.2 A third of kerbside residual waste is food waste. Campaign work for the coming year can continue to focus on food waste capture and continue to emphasise that all food waste can be recycled at the kerbside (meat, fish and plate scrapings). The results from the Stratford trial can be combined with current national best practice to inform a programme of behaviour change interventions across the county that will drive down the amount of food waste in the residual bin.
- 4.3 The composition shows that paper, card, plastic, metal, glass, textiles, WEEE are still being incorrectly placed in the residual kerbside bin, so the partnership needs to continue to promote recycling services to engage householders.
- 4.4 A report on the composition of the residual waste at the HWRCs will be provided at the March 2019 meeting. The HWRC data has not yet been received by the Council, as there was a delay in sorting the material from one of the sites.

## Background Papers

1. None.

	<b>Name</b>	<b>Contact Information</b>
Report Author	Ruth Dixon	<a href="mailto:ruthdixon@warwickshire.gov.uk">ruthdixon@warwickshire.gov.uk</a>
Assistant Director for Environment Services	Stuart Jackson	<a href="mailto:stuartjackson@warwickshire.gov.uk">stuartjackson@warwickshire.gov.uk</a>
Joint Managing Director (Communities)	Monica Fogarty	<a href="mailto:monicafogarty@warwickshire.gov.uk">monicafogarty@warwickshire.gov.uk</a>
Portfolio Holder - Environment and Heritage and Culture	David Reilly	<a href="mailto:cllreilly@warwickshire.gov.uk">cllreilly@warwickshire.gov.uk</a>

## Appendix 1 Waste Material Categories

Primary categories	Sub-categories
PAPER	Newspaper & magazines
	Catalogues & Directories
	Other recyclable paper
	Paper tissue
	Shredded paper
	Other non-recyclable paper
CARD	Tetrapak cartons
	Corrugated Cardboard
	Thin high-grade packaging card
	Thin high-grade non-packaging card
	Thin low-grade brown card
	Non-recyclable card & books
PLASTIC FILM	Packaging film
	Carrier Bags
	Refuse Sacks
	All other film
DENSE PLASTIC	Plastic Bottles Types 1,2,3,5,
	Plastic Bottles Types 4,6,7
	Other Bottles
	EPS
	Packaging Containers Types 1,2,3,5,
	Packaging Containers Types 4,6,7
	Other dense plastic
TEXTILES	Reusable clothing
	Pairs of shoes
	Accessories
	Carpet & underlay
	Clean bed linen, curtains, blankets & towels
	All other textiles & odd shoes
	Composite & laminates INC TREATED WOOD
	DIY based materials
MISC COMBUSTIBLES	Untreated Wood
	Disposable nappies
	All incontinence & absorbent hygiene products
	All other
	Plasterboard
MISC NON-COMBUSTIBLES	DIY rubble & ceramics
	All other inc Pet Litter non-organic
	Green packaging
GLASS	Brown packaging
	Clear bottles
	Clear jars
	Other glass
	Drinks cans
	Food cans & tins
FERROUS METAL	Aerosols
	Other ferrous packaging inc jar lids
	Other ferrous
	Drinks cans
NON-FERROUS METAL	Food cans & tins
	Aerosols
	Aluminium foil and trays
	Other non-ferrous
	Flora organics
GARDEN WASTE	Soil & turf
	All fully packaged & unopened Home compostable food waste
	All fully packaged & unopened Non-Home Compostable food waste
	All loose Home Compostable food waste
	All loose Non-Home compostable food waste
	All mixed un-sortable Food waste
	Herbivorous Pet Straw & Sawdust Bedding
	Consumable Liquids
	Fats & Oils
	Compostable Liners
	Particles passing a 10mm screen
FINES	Household Batteries
	Engine Oil
	Other Separately listed
HHW	Small WEEE
	All other – separately listed
WEEE	

## Appendix 2 - Recyclables in the kerbside residual bin

### Paper

35.6% or 0.123 KG/HH/WK of all the paper in the kerbside residual bin was recyclable at the kerbside in 2018. This equates to 3.3% of the total residual waste.

	2013	2014	2015	2016	2017	2018
Recyclable paper KG/HH/WK	0.39	0.33	0.23	0.31	0.23	0.12

### Card / cardboard

54.9% or 0.08 KG/HH/WK of the card/cardboard in the kerbside residual bin was recyclable at the kerbside. This equates to 2.1% of the total residual waste.

	2013	2014	2015	2016	2017	2018
Recyclable card KG/HH/WK	0.22	0.22	0.19	0.20	0.36	0.08

### Plastic

57% of plastics in the kerbside residual bin consisted of plastic bottles, trays, tubs and containers, this shows that 3.4% of residual waste or 0.13 KG/HH/WK is currently recyclable within existing kerbside collection schemes.

	2013	2014	2015	2016	2017	2018
Recyclable plastics KG/HH/WK	0.33	0.25	0.26	0.34	0.20	0.13

### Metal

65% or 0.07 KG/HH/WK of metallic waste in the kerbside residual bin was recyclable. This equates to 1.8% of the total residual waste.

There were more recyclable food tins compared to drinks cans in the residual waste, this may be because they tend to require a degree of washing/rinsing before being placed into recycling containers and as such are often less well diverted than cleaner drinks cans.

	2013	2014	2015	2016	2017	2018
Recyclable metal KG/HH/WK	0.14	0.11	0.11	0.16	0.09	0.07

### Glass

75.4% or 0.06 KG/HH/WK of glass in the kerbside was recyclable. This equates to 1.4% of all collected residual waste.

In all areas of the County the majority of the recyclable glass found within the residual waste was higher grade clear glass. Around 53% of the clear glass was due to jars as opposed to bottles. In the same way that food tins are often recycled less effectively than drink cans; jars often contain food or sauce and householders may choose not to rinse them for recycling.

	2013	2014	2015	2016	2017	2018
Recyclable metal KG/HH/WK	0.15	0.13	0.13	0.12	0.10	0.06

## Textiles

Textiles are able to be recycled at the kerbside within the following waste collection authority areas: NBBC, SDC and WDC.

If we include textiles (e.g. clothing and shoes) that are able to be reused at charity shops and bring banks, as well as those able to be recycled at the kerbside (and assume that textiles are able to be recycled in all five areas), it shows that 71% of the textiles within the residual bin could have been reused or recycled. This equates to 4.3% or 0.17 KG/HH/WK of the total residual waste.

	2013	2014	2015	2016	2017	2018
Re-usable and recyclable textiles KG/HH/WK	0.25	0.34	0.10	0.28	0.23	0.17

## Hazardous Waste and Waste Electrical and Electronic Equipment (WEEE)

1.8% or 0.07 KG/HH/WK of the residual waste was deemed to be either Hazardous or WEEE.

The hazardous waste included items such as batteries, ink cartridges, lightbulbs, paint and chemicals. The WEEE waste included items such as small appliances (kettle, shredder etc.), phones, toys, smoke alarm, cameras, cables and leads, clocks, solar lights, controllers).

	2013	2014	2015	2016	2017	2018
HHW and WEEE KG/HH/WK	Not available	0.01	0.01	0.03	0.12	0.07

## Disposable nappies and Absorbent Hygiene Products (AHP)

13.2% of the kerbside residual waste bin consisted of disposable nappies (12.15%) and AHP waste (1.09%) – equivalent to 0.52 kg/hh/wk.

	2013	2014	2015	2016	2017	2018
Nappies KG/HH/WK	0.56	0.40	0.30	0.51	0.36	0.48
AHP KG/HH/WK	NA	0.06	0.09	0.12	0.07	0.04





# Warwickshire Waste Partnership

19 December 2018

## Waste Partners Report

### Recommendations

- (1) The Waste Partnership is asked to acknowledge the updates on the various waste activities taking place in each area since the last partnership meeting in September 2018.

#### 1.0 Introduction

- 1.1 This report provides an update on the various waste initiatives taking place in each authority area.

#### 2.0 North Warwickshire Borough Council

- 2.1 The trial of bags to replace paper and card inserts has now concluded and feedback from the residents and crews who took part in the trial is currently being evaluated with a final report on the way forward going to the Council's Community & Environment Board in January next year.
- 2.2 Following the joint tendering exercise with Coventry City Council, EMMAUS, a local charity which helps the homeless, has been chosen to carry out the bulky waste collection service from 3<sup>rd</sup> December onwards.
- 2.3 New collection calendars gone online. All waste collections will be suspended for a week over Christmas with green waste collections being halted for four weeks from mid-January to mid-February.
- 2.4 A two year extension to the contracts for reprocessing the Council's kerbside recyclables has been negotiated with the Council's contractors and agreed by Board.
- 2.5 The waste management service took part in #OurDay on 20<sup>th</sup> November tweeting updates on the numerous frontline and support services which the Council provides on a daily basis.

### **3.0 Nuneaton & Bedworth Borough Council**

#### **3.1 Depot**

- a) Gresham Road Depot is now operational and we are undertaking most operations with the exception of some sweepings due to drainage requirements, which should be resolved early New Year.

#### **3.2 Refuse and Recycling**

- a) Have started receiving new refuse vehicles and should have all 6 delivered by end of November.
- b) Dates agreed for Christmas and New Year 2018/19 working and sent to WCC for information.
- c) Additional resources put into the refuse collection budget to respond to increased pressures due to new developments. A full reconfiguration exercise is currently being undertaken.
- d) Recycling MRF contract and collections agreement, commenced 22<sup>nd</sup> October 2018 with H.W. Martin Waste Ltd and Coventry City Council. The changeover has gone very well and has been a smooth transition. Additional materials to be introduced to the service in the New Year.
- e) Trade Recycling rounds as part of our commercial waste partnership with Coventry to be launched in the New Year which will replace the previously free cardboard collection.
- f) NBBC green waste second bin charging has been introduced and has been generally well received by most residents. If agreed at full cabinet, full green charging to be introduced and go live from start of February 2019.
- g) In-cab technology trials are almost complete for both green and black bin crews, hoping to be ready to go live in early 2019.

#### **3.3 Promotions/Communications**

- a) Christmas collection change communications have been prepared ready to deliver; these include: hangers, collection calendars, social media campaigns and reminders, inclusion in council and partners magazines, recorded message on customer service line and posters for town centres and corporate buildings. Hangers to be used to enable communicating green charging scheme at the same time.
- b) Communications for the inception of the new recycling contract materials to be launched in the New Year.

- c) Website pages created to include promotion of home composting, linking to WCC pages – using green charging as a platform to promote this.
- d) Recycle week promotions during September went well, daily roadshows throughout the town and local business' with WCC support.

### 3.4 Enforcement

- a) Enforcement Partnership contract awarded to 3GS, due to begin a soft launch during December 2018. Agreement to include PSPO alcohol, littering, fly tipping and dog fouling enforcement.

## 4.0 Rugby Borough Council

- 4.1 Undertaking trial loads of domestic waste to W2R with Warwickshire County Council.
- 4.2 Route optimisation on going for our domestic refuse and recycling rounds.
- 4.3 Garden waste subscription 23,108 overall 50% take up.
- 4.4 Driver training programme - currently 6 refuse loaders / Street cleansing operatives qualifies as relief class 2 drivers.

## 5.0 Warwick District Council

- 5.1 WDC's working partnership with Rugby Borough Council on Environmental Enforcement has started with particular focus on fly tipping and accumulation of waste on properties (particularly concerning HMO/Student properties). Since May this year over 200 section 46/47 letters have been issued, and due to the delay in signing off the Service Level Agreement we have extended the agreement with RBC to run until March 2020.
- 5.2 Following a review of Warwick District Council's existing service-specific enforcement policies it was agreed that a single policy for all services would be created in line with the Regulators' Code. In October WDC's Executive Council agreed a new enforcement policy.
- 5.3 With the start of the new university academic year, we have posted out just under 1900 welcome postcards to known student properties, posted out approx. 450 letters to known student landlords, undertaken a 4 week social media campaign aimed at students and sent out an email to all returning 2<sup>nd</sup>, 3<sup>rd</sup> and 4<sup>th</sup> year students via Warwick Student Union, and attended a student welcome event organised by Warwick Student Union. This is to support a reduction in the number of waste related issues created by the new student intake each year.

- 5.4 We have begun our Christmas communications for the changes to refuse and recycling collections over the 2 week festive period. This will affect all properties so our communications campaign involves bin tags, direct mail postcards, newspaper and radio advertising, social media along with lots of other things to ensure the message reaches as many residents as possible.
- 5.5 The roll out of the 80 additional litter bins across the District will begin in January 2019. This supports funding for an additional 100 collections a day from known problem areas.
- 5.6 Also our Overview and Scrutiny committee have asked for the following question to be raised at the WWP forum:
- Would WCC consider reducing the charges imposed on builders at recycling centres to help reduce fly-tipping in the District?

## **6.0 Stratford-on-Avon District Council**

- 6.1 The “Recycle Right” social media initiative has celebrated its first birthday.
- 6.2 A review has taken place to see the effectiveness of the initial batch of flats recycling bags. In most cases the findings are positive on the quality of material being deposited.
- 6.3 The local environmental quality enforcement policy has been adopted by SDC cabinet and publicized and is available on our website.
- 6.4 We are working on duty of care advice / enforcement for businesses.
- 6.5 Work has started on a project targeting contamination. This will include a communications campaign.
- 6.6 Initial work has started on the new waste management contract which commences in 2022.
- 6.7 The litter picking schedule is now on the SDC website to assist residents in knowing when this work is carried out.
- 6.8 A new executive director, Isabel Edgar Briançon, started on 1 November 2018. Isabel replaces Dave Webb who retires on 31 December 2018.
- 6.9 A further one tonne of batteries has been collected in our kerbside batteries, WEEE and textiles collection.

## 7.0 Warwickshire County Council

### 7.1 Communication activities update:

- a) 9,630 subscribers received the November edition of the 'Warwickshire Recycles' e-newsletter, featuring: home composting; schools talks; reducing food waste; food waste recycling and Slim Your Bin. There is a Christmas edition this year and a 'Reduce Waste at Christmas' web page.
- b) Slim Your Bin has recruited 728 'bin dieters' onto its 4-week training programme. We will be asking elected members from all local authorities to help to promote the scheme, along with our finalists from the Recycling Champion of the Year contest.
- c) We are promoting opportunities to volunteer in waste minimisation, including: master composter; recycling champion; reuse shop volunteer; Repair Café volunteer; litter pick organiser.
- d) We promoted home composting in the autumn and will do further promotion in NBB over the winter.
- e) 8 schools have had a talk on recycling or composting this term
- f) We are following up the food waste recycling pilot in Stratford District that took place this year with a questionnaire to residents. The questionnaire will also promote our ongoing campaigns to 3000 households. We are analysing results to establish which trial intervention was the most cost effective.
  - i. Provision of comprehensive resources and information;
  - ii. Provision of moderate resources and information;
  - iii. Provision of basic information / signposting
- g) The countywide food waste recycling behaviour change campaign – In to Win, continues across the county. At least 5542 households are now signed up.
- h) All waste reduction behaviour change activity is promoted with regular posts on our social media accounts, with 1030 followers on Facebook (Warwickshire Recycles) and 795 followers on Twitter (@WarksRecycles).
- i) We have donated a further £10,140 to Guide Dogs from proceeds from recycling textiles at the HWRCs. We have the opportunity to name another puppy-in-training.

### 7.2 Procurement and Contracts update:

- a) The following extensions are being considered; recycling of streetsweepings, re-use shops and HWRC operation (Stockton and Wellesbourne), textile recycling, clinical disposal, waste site monitoring (gas and water), paint recycling.
- b) Quotations currently taking place for asbestos reprocessing/disposal and reprocessing of leachate and recycling of tyres.

- c) A contract was awarded to Veolia for the haulage of some kerbside residual waste in Rugby to the W2R facility in Staffordshire for energy recovery.
- d) Ongoing market testing is taking place for carpet and mattress recycling.
- e) Body Worn Video Camera trial taking place at Princes Drive.

## Background Papers

1. None

	<b>Name</b>	<b>Contact Information</b>
Report Author	Tamalyn Goodwin	<a href="mailto:tamalyngoodwin@warwickshire.gov.uk">tamalyngoodwin@warwickshire.gov.uk</a>
Assistant Director (Communities)	Stuart Jackson	<a href="mailto:stuartjackson@warwickshire.gov.uk">stuartjackson@warwickshire.gov.uk</a>
Joint Managing Director (Communities)	Monica Fogarty	<a href="mailto:monicafogarty@warwickshire.gov.uk">monicafogarty@warwickshire.gov.uk</a>
Portfolio Holder for Environment and Heritage and Culture	David Reilly	<a href="mailto:cilreilly@warwickshire.gov.uk">cilreilly@warwickshire.gov.uk</a>